



## Results

**Orange** or **red** highlights indicate that the EPA [criteria](#) have been exceeded.

[Black-and-white version](#)

### Persistence

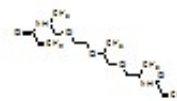
### Bioaccumulation

### Toxicity

n/a JA-DAA low molecular weight single structure

### PBT Profiler Estimate = PBT

<u>Media</u>	<u>Half-Life</u> (days)	<u>Percent in</u> <u>Each Medium</u>	<u>BCE</u>	<u>Fish ChV</u> (mg/l)
Water	38	26%	3.2	13
Soil	75	74%		
Sediment	340	0%		
Air	0.11	0%		



### P2 Considerations and more information

Based on its structure, this chemical may belong to the Acrylamides (Human Health and Environmental Toxicity) and Ethylene Glycol Ethers (Human Health and Environmental Toxicity) categories. Members of these categories may have potential concerns shown. [More information and category definitions](#).

[Start a New Profile](#)

[Add More Chemicals to Your Profile](#)

The PBT Profiler Results are available for 20 minutes

**NOTE: The estimation modules used by the PBT Profiler have been updated. Some chemicals may produce different profiles than in prior versions. For a full list of updates see the ["What's new" section](#).**

*Developed by the Environmental Health Analysis Center under contract to the Office of Chemical Safety and Pollution Prevention, U.S. Environmental Protection Agency*

*Computer Resources Donated by [SRC, Inc.](#) Ver 2.000 Last Updated September 4, 2012*